



# *neoNytro*

Asset tracking via GPS, emergency location service and text messaging

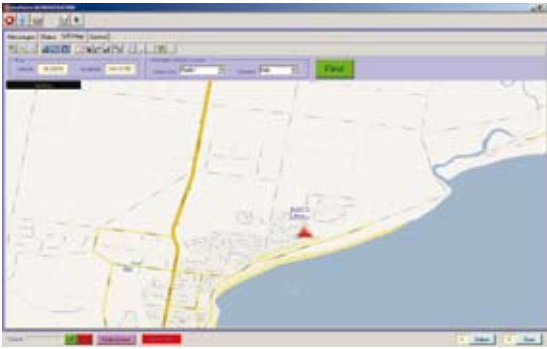


*neoNytro*

*neoNytro is an acclaimed value-for money package, which offers enhanced text messaging, asset tracking via GPS and emergency location service for MOTOTRBO digital two-way radios.*



- Location based services via GPS.
- Lone worker system.
- Short and long text messaging.
- Bundled MapMaker and setup utilities to calibrate customer supplied maps with the software.
- Status monitoring.
- Extensive archives and reporting.
- PTT display.
- IP connector feature for 3rd party integration.
- Automatic Registration Service (ARS) functions.
- Telemetry support.



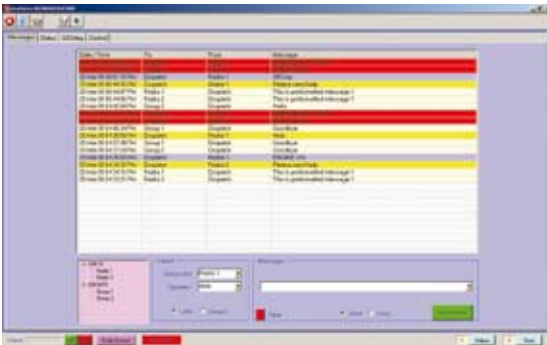
### Real-time vehicle tracking

View the movement of vehicles in real time allowing for accurate monitoring of a fleet for efficient routing.



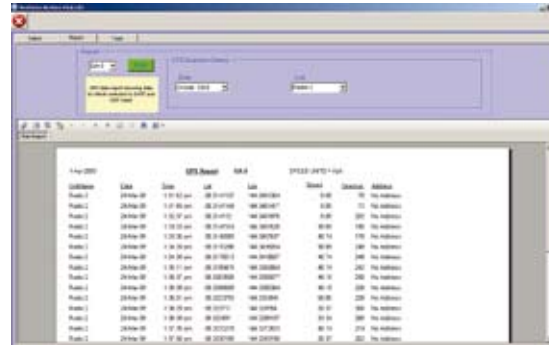
### Archived playback tracking report

The ability to playback vehicle movement via the advanced archiving playback tracking report provides managers with a comprehensive and visual audit trail of fleet movements.



### Dispatch text messaging

Communicate via text messaging directly to MOTOTRBO radios using the neoNytro desktop application. Full audit trails of messages are provided.



### Archived written reports

Comprehensive reports on the functional status of all MOTOTRBO radios are available.

# neoNytro

## Text messaging, asset tracking via GPS and emergency location service

neoNytro is the first value-for-money software package built specifically for MOTOTRBO radios. This all-in-one solution offers location based services via GPS, using MapMaker to easily calibrate customer supplied maps, which allows for easy tracking of assets as well as the added safety of knowing the location of your team members.

Monitoring the individual well being of a team member is now also possible with neoNytro's lone worker system. The lone worker system helps to ensure the safety of your team, by raising an alarm if regular status messages are not received from a radio at prescribed intervals.

Enhanced text messaging allows for quick and easy communication which ensures your team is up-to-date with information.

neoNytro functionality also includes telemetry and automatic registration services (ARS) to continually monitor the functional status of your MOTOTRBO radios.

Key features of neoNytro include:

- Location based services via GPS.
- Lone worker system.
- Short and long text messaging.
- Bundled MapMaker and setup utilities to calibrate customer supplied maps with the software.
- Status monitoring.
- Extensive archives and reporting.
- PTT display.
- IP connector feature for 3rd party integration.
- Automatic Registration Service (ARS) functions.
- Telemetry support.



neoNytro for MOTOTRBO works seamlessly with MOTOTRBO radios providing an all-in-one solution.



**MOTOROLA**

Motorola Australia  
10 Wesley Crt  
Tally Ho Business Park  
Burwood East, VIC 3151  
Australia  
+61 3 9847 7500  
[www.motorola.com.au](http://www.motorola.com.au)